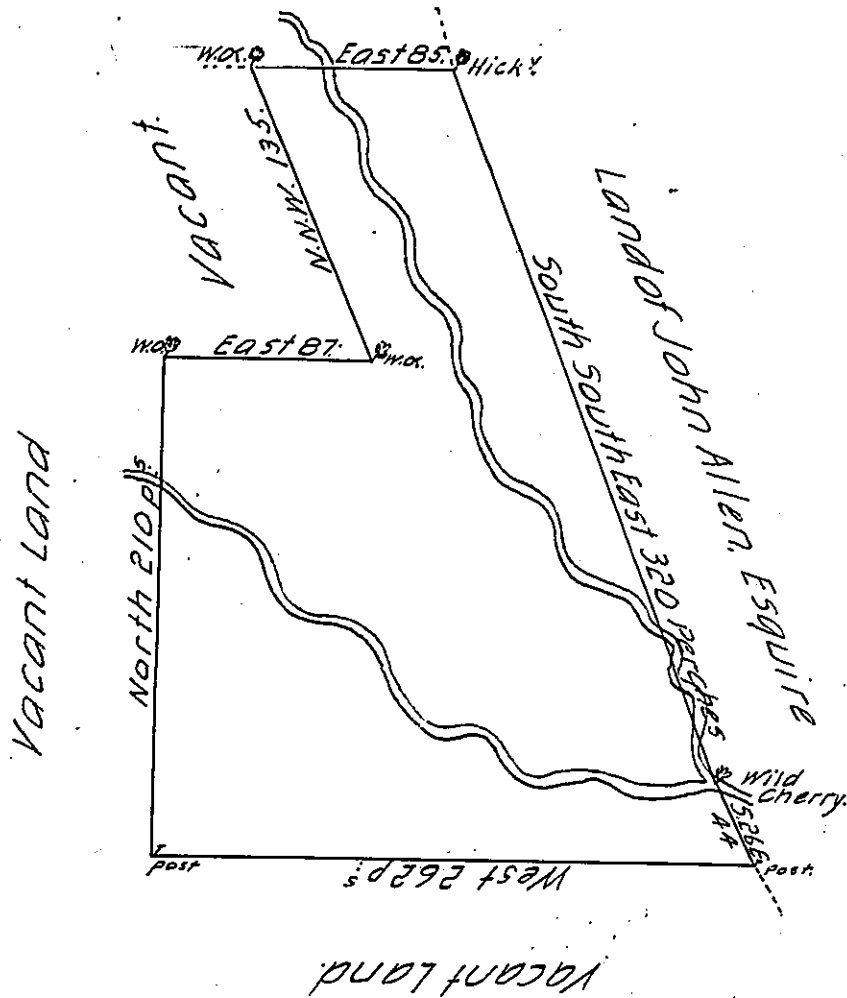


Valentine
Messersmith



By Virtue of an Application dated the third Day of April 1769, N^o 712, Surveyed the 15th May 1771, unto John McCawley the above described Tract of Land situate on a branch of Chillisquaque Creek, in the County of Berks, containing Three hundred & thirty Acres, & allowance of Six p-Ct

p- W^m Scull -

IN TESTIMONY that the above is a copy of the original remaining on file in the Department of Internal Affairs of Pennsylvania, made conformably to an Act of Assembly approved the 16th day of February, 1833, I have hereunto set my Hand and caused the Seal of said Department to be affixed at Harrisburg, this twenty-fourth day of June 1904

Grace B. Brown
Secretary of Internal Affairs.